

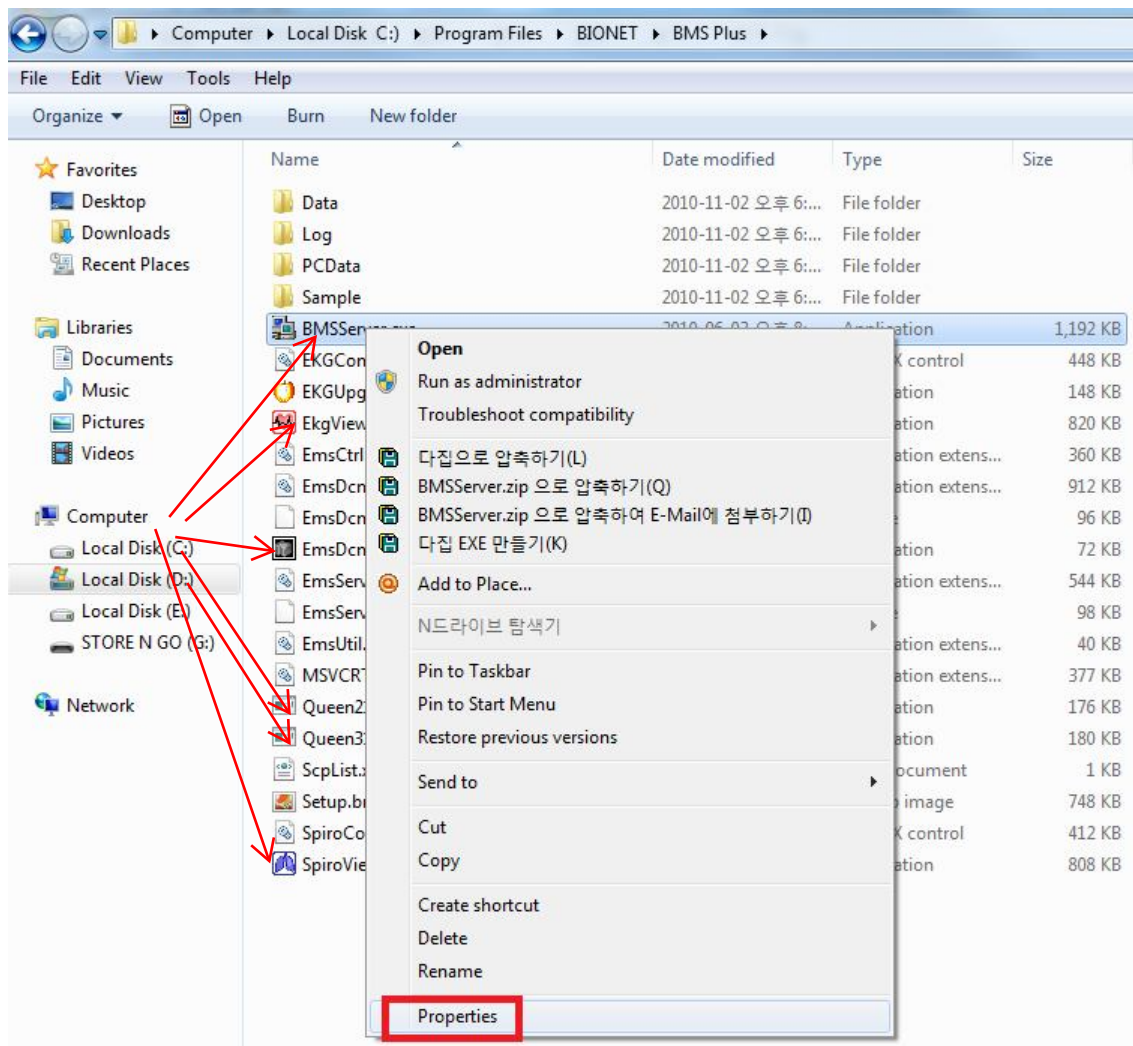
How to run BMS Plus On Windows7

1. Go to the installed path of the program.

* Default path: **C:\Program Files\Bionet\BMS Plus**

2. Please find the following files in the installed folder and change all their properties as shown below.

BMSServer.exe, Ekg Viewer.exe, SpiroViewer.exe, EmsDcmStoreSCU.exe, Queen31.exe, Queen21.exe.



3. Go to Compatibility tab and change the **Compatibility mode** and **Privilege Level** as shown below.

